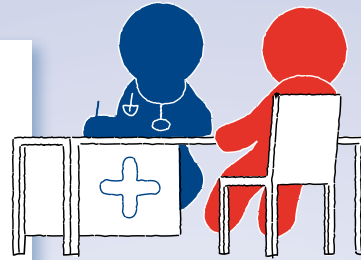


From diagnosis to optimal treatment...

HIV care in designated centres

When a person is diagnosed with HIV, they are referred to a designated HIV treatment centre in the Netherlands. At every hospital visit, the treatment team records the patient's medical information in the patient's medical file.



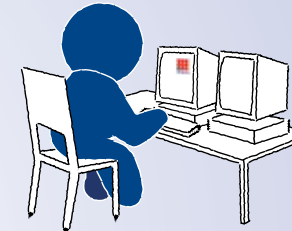
1

What information does SHM collect?

SHM collects HIV-specific information, such as viral load suppression, immune recovery, HIV drug resistance and overall survival. SHM also collects information on diseases in people living with HIV, which are becoming more important as these people reach an older age.

Stichting HIV Monitoring (SHM) collects medical information

With the patient's approval, SHM collects the patient's medical information at the treatment centre for research and national reporting. This helps to maintain the high quality of HIV care in the Netherlands.

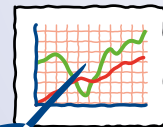


2

...how clinical data contribute to HIV care

Improving care

SHM also provides treatment centres with regular updates of their own data. These updates are used by the centres and care teams to review their performance and improve patient care.



4

SHM contributes to global HIV research

Our data are also used in national and international HIV research. This research provides tangible input into HIV treatment guidelines and prevention policies and leads to improvements in HIV care worldwide.



Stichting HIV Monitoring

Founded in 2001, Stichting HIV Monitoring (SHM) was appointed by the Dutch Ministry of Health, Welfare and Sport as the executive organisation for the registration and monitoring of HIV-infected patients in the Netherlands.

SHM comprehensively maps the HIV epidemic and HIV treatment outcomes in the Netherlands, thereby contributing to the knowledge of HIV. Working with all HIV treatment centres throughout the Netherlands, SHM has developed a solid framework for systematically collecting HIV data for the long-term follow up of all registered patients. The Netherlands is the only country in the world to have such a framework, which enables healthcare professionals to aspire to the highest standard of HIV care.

In addition to the national reports, healthcare professionals are provided with treatment centre-specific reports to enable them to monitor and optimise care provided in their centres. Moreover, SHM data are also made available upon request for use in HIV-related research, both in the Netherlands and internationally. The outcome of SHM's research and international collaborations provides tangible input into policy guidelines and further improves HIV care in the Netherlands.

For further information about SHM or to sign up for our newsletter, please visit our website: www.hiv-monitoring.nl or send us an email: hiv.monitoring@amc.uva.nl.

Stichting HIV Monitoring

From diagnosis to optimal treatment: Every patient counts



Stichting HIV Monitoring

Postal address: Academic Medical Center of the University of Amsterdam, Meibergdreef 9, 1105 AZ Amsterdam, The Netherlands

Visiting address: Tafelbergweg 51, 1105 BD Amsterdam, The Netherlands

© All rights reserved. No permission is given for the reproduction or publication of the content of this leaflet in any form or by any means, or storage in any retrieval system without prior written approval by SHM.